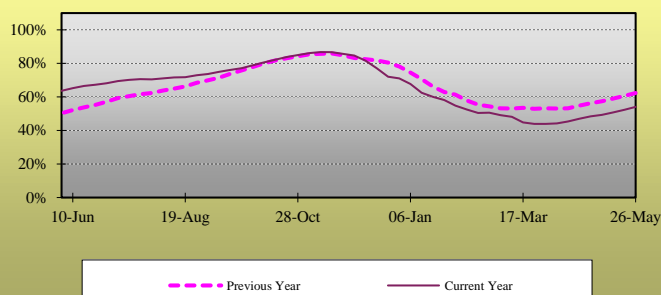


## Weekly Natural Gas Report

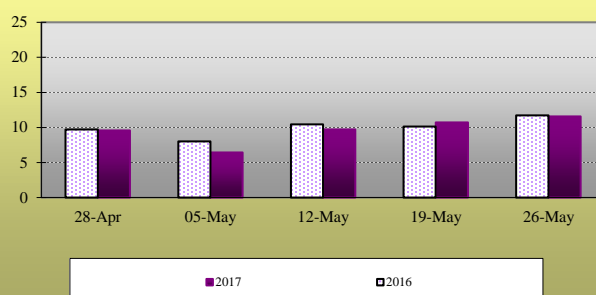
### EIA STATISTICS<sup>1</sup>

Week Ending	REPORTED GAS IN STORAGE						DAILY WITHDRAWAL/INJECTION					
	South Central <sup>2</sup>	East <sup>3</sup>	Midwest <sup>4</sup>	Mountain <sup>5</sup>	Pacific <sup>6</sup>	2017	Week	2016	Week	2017	Week	2016
						Total	Change	Total	Change	2017	Change	2016
05-May	1034	350	524	155	238	2301	45	2681	56	6.43	0.71	8.00
12-May	1057	367	540	161	244	2369	68	2754	73	9.71	3.29	10.43
19-May	1076	390	562	166	250	2444	75	2825	71	10.71	1.00	10.14
26-May-17	1097	419	585	166	258	2525	81	2907	82	11.57	0.86	11.71
02-Jun	----	----	----	----	----	----	----	2972	65	----	----	9.29
09-Jun	----	----	----	----	----	----	----	3041	69	----	----	9.86
16-Jun	----	----	----	----	----	----	----	3103	62	----	----	8.86

**Total Working Gas Design Capacity Utilization<sup>7</sup>**



**Daily Withdrawal/Injection Rate**



### RIG COUNTS<sup>8</sup>

Producing:	Oil	Natural Gas	Misc.	US Total	Percentage Oil	Percentage Gas
Latest Week	722	185	1	908	79.5%	20.4%
Prior Week	720	180	1	901	79.9%	20.0%
Year Ago	316	87	1	404	78.2%	21.5%

### HEATING DEGREE DAY SUMMARY<sup>9</sup>

For the week ending 27-May-2017

City	Latest Week	Normal	Percent of Normal
BOSTON	62	38	163.2%
NEW YORK	15	18	83.3%
WASHINGTON	5	7	71.4%
CHICAGO	31	38	81.6%
MINNEAPOLIS	50	34	147.1%
DALLAS	0	0	
OKLAHOMA CITY	15	4	375.0%
DENVER	62	45	137.8%
SEATTLE	17	56	30.4%

<sup>1</sup> Statistics as reported by the Energy Information Agency. All figures in Billions of Cubic Feet unless otherwise noted.

<sup>2</sup> South Central region includes TX, OK, KS, LA, MS and AL

<sup>3</sup> East region includes all Atlantic Coast states, including OH, PA, VT, and WV

<sup>4</sup> Midwest region includes MN, IA, MO, WI, IL, MI, IN, KY and TN

<sup>5</sup> Mountain region includes ID, NV, MT, WY, UT, AZ, ND, SD, NE, CO, and NM

<sup>6</sup> Pacific region includes WA, OR, and CA

<sup>7</sup> Reported Gas in Storage as a percentage of Working Gas Design Capacity. For explanation of Working Gas Design Capacity see: [www.eia.gov/naturalgas/storagecapacity/](http://www.eia.gov/naturalgas/storagecapacity/)

<sup>8</sup> As Reported By Baker-Hughes. Miscellaneous includes wells drilling for both Oil and Gas.

<sup>9</sup> Heating Degree Days given during winter months, Cooling Degree Days over Summer months. Changeover is as appropriate.