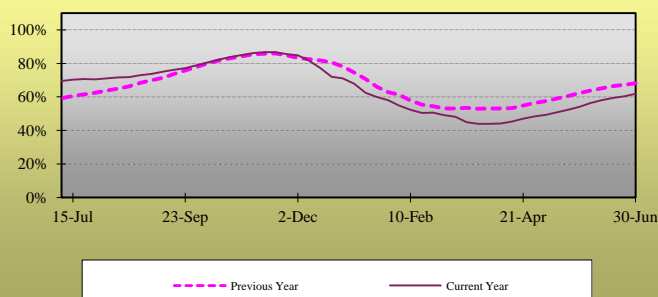


## Weekly Natural Gas Report

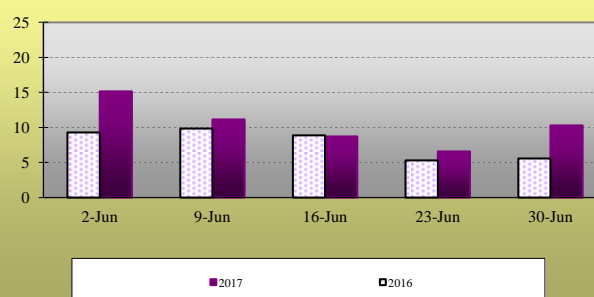
### EIA STATISTICS<sup>1</sup>

Week Ending	REPORTED GAS IN STORAGE						DAILY WITHDRAWAL/INJECTION					
	South Central <sup>2</sup>	East <sup>3</sup>	Midwest <sup>4</sup>	Mountain <sup>5</sup>	Pacific <sup>6</sup>	2017	Week Change	2016	Week Change	2017	Week Change	2016
						Total		Total		Total		
9-Jun	1133	491	634	177	274	2709	78	3041	69	11.14	0.03	9.86
16-Jun	1138	513	656	182	281	2770	61	3103	62	8.71	(2.43)	8.86
23-Jun	1140	536	676	184	280	2816	46	3140	37	6.57	(2.14)	5.29
30-Jun-17	1151	564	699	187	287	2888	72	3179	39	10.29	3.71	5.57
7-Jul	----	----	----	----	----	----	----	3243	64	----	----	9.14
14-Jul	----	----	----	----	----	----	----	3277	34	----	----	4.86
21-Jul	----	----	----	----	----	----	----	3294	17	----	----	2.43

**Total Working Gas Design Capacity Utilization<sup>7</sup>**



**Daily Withdrawal/Injection Rate**



### RIG COUNTS<sup>8</sup>

Producing:	Oil	Natural Gas	Misc.	US Total	Percentage Oil	Percentage Gas
Latest Week	756	184	0	940	80.4%	19.6%
Prior Week	758	183	0	941	80.6%	19.4%
Year Ago	341	89	1	431	79.1%	20.6%

### COOLING DEGREE DAY SUMMARY<sup>9</sup>

For the week ending 1-Jul-2017

City	Latest Week	Normal	Percent of Normal
BOSTON	53	47	112.8%
NEW YORK	78	67	116.4%
WASHINGTON	93	89	104.5%
CHICAGO	31	51	60.8%
MINNEAPOLIS	24	47	51.1%
DALLAS	118	128	92.2%
OKLAHOMA CITY	101	103	98.1%
DENVER	38	46	82.6%
SEATTLE	25	7	357.1%

<sup>1</sup> Statistics as reported by the Energy Information Agency. All figures in Billions of Cubic Feet unless otherwise noted.

<sup>2</sup> South Central region includes TX, OK, KS, LA, MS and AL

<sup>3</sup> East region includes all Atlantic Coast states, including OH, PA, VT, and WV

<sup>4</sup> Midwest region includes MN, IA, MO, WI, IL, MI, IN, KY and TN

<sup>5</sup> Mountain region includes ID, NV, MT, WY, UT, AZ, ND, SD, NE, CO, and NM

<sup>6</sup> Pacific region includes WA, OR, and CA

<sup>7</sup> Reported Gas in Storage as a percentage of Working Gas Design Capacity. For explanation of Working Gas Design Capacity see: [www.eia.gov/naturalgas/storagecapacity/](http://www.eia.gov/naturalgas/storagecapacity/)

<sup>8</sup> As Reported By Baker-Hughes. Miscellaneous includes wells drilling for both Oil and Gas.

<sup>9</sup> Heating Degree Days given during winter months, Cooling Degree Days over Summer months. Changeover is as appropriate.