



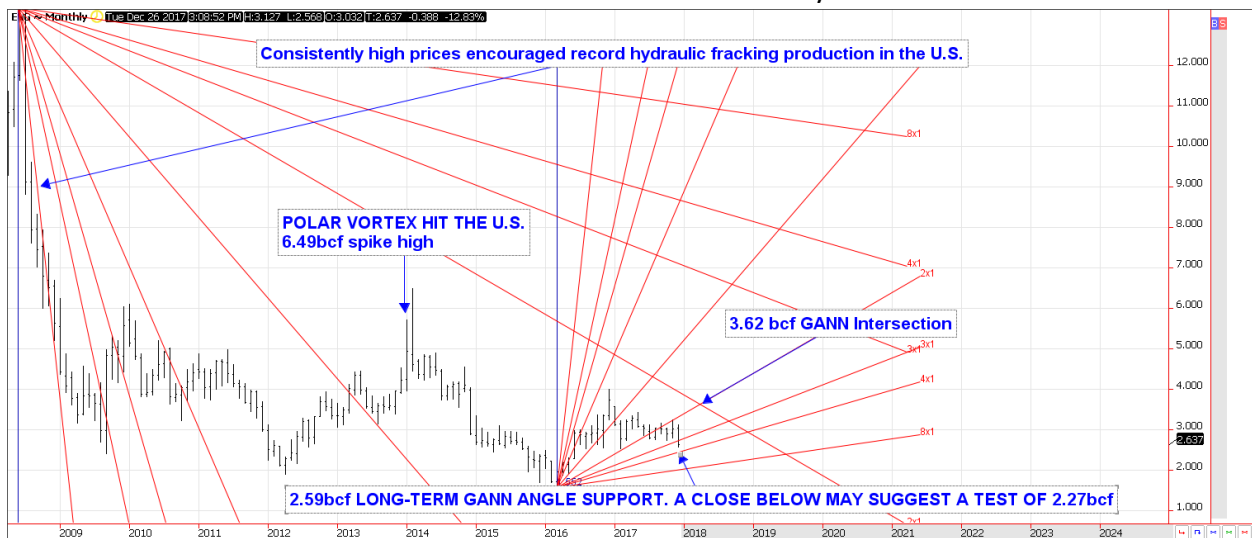
TECHNICAL ANALYSIS OF KEY COMMODITY MARKETS

By Blake Robben (Dec 29)

I will chart analyze key commodity markets. Keep in mind the analysis time is 10 a.m. central time on Wednesday December 27th, 2017. Please contact me for current updates and or comments. Thank you and trade well my friend!

When will the Nasty Natural Gas Bear Market Hibernate?

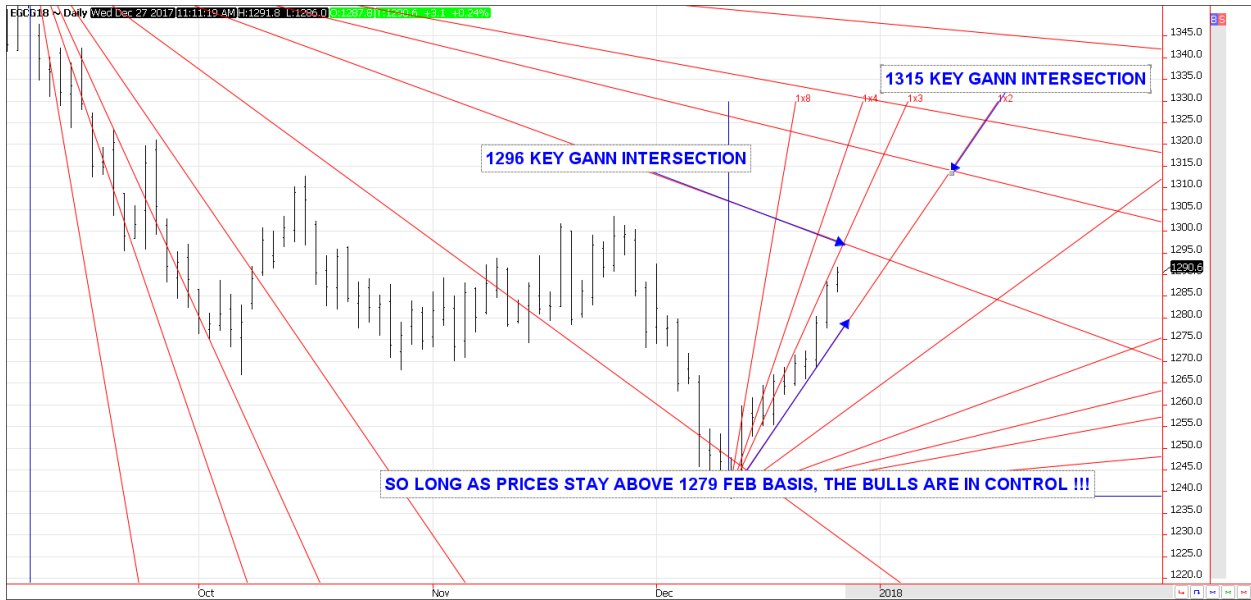
Natural Gas Futures - Monthly



Charts from QST

Will Gold Glitter or Become Kitty Litter in 2018?

Gold Futures - Daily



Will Coffee Percolate Higher?

Coffee Futures - Daily



Will Silver Shine?

Silver Futures - Daily



For further discussion on these markets, please contact me at 312.242.7990 or via email at blake.robben@archerfinancials.com. I look forward to hearing from you.

Would you like to open an account with Blake? Go to our interactive New Account application at [Open An Account](#). It is fast, saves on postage and it's green.

Blake Robben

Senior Account Representative



Archer Financial Services



ADM Investor
Services, Inc.



141 West Jackson Blvd. Chicago, IL 60604

Chicago Board of Trade Building Suite 2100A

Toll Free: 888-797-7969

Office Direct: 312-242-7990

Office Hours: 7am to 3:30pm Central time

Futures and options trading involve significant risk of loss and may not be suitable for everyone. Therefore, carefully consider whether such trading is suitable for you in light of your financial condition. The risk of loss in trading futures and options can be substantial. Past results are not indicative of future results or performance. The views and opinions expressed in this letter are those of the author and do not reflect the views of ADM Investor Services, Inc. or its staff. Research analyst does not currently maintain positions in the commodities specified within this report. The information provided is designed to assist in your analysis and evaluation of the futures and options

markets. However, any decisions you may make to buy, sell or hold a futures or options position on such research are entirely your own and not in any way deemed to be endorsed by or attributed to ADMIS. Copyright ADM Investor Services, Inc.